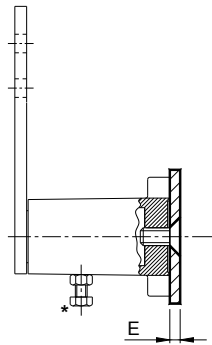
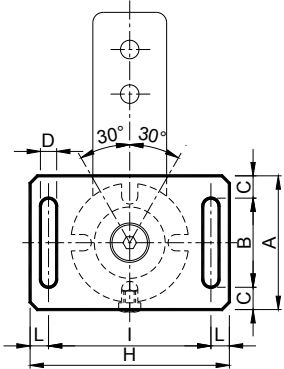
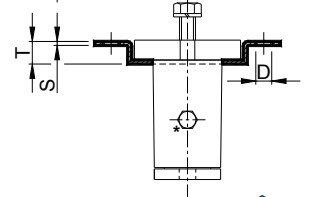
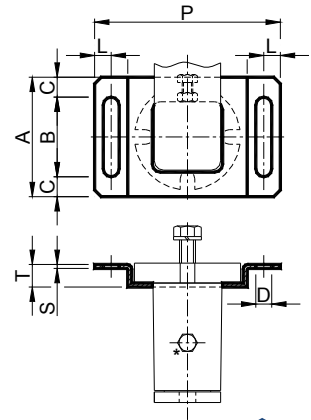


Supports – Type: SU and ST / Supporti – Tipo: SU and ST

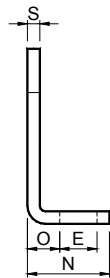
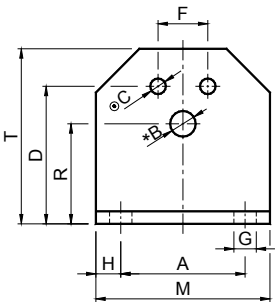
SU


MATERIALS Steel.
TREATMENTS Zinc-plated.
USE The elastic element can be adjusted in two ways: radially and axially by means of the "SU" and "ST" brackets.

MATERIALI Acciaio.
TRATTAMENTI Zincatura.
IMPIEGO Con le staffe "SU" e "ST" è possibile avere la doppia regolazione dell'elemento elastico "Radiale" ed "Assiale".

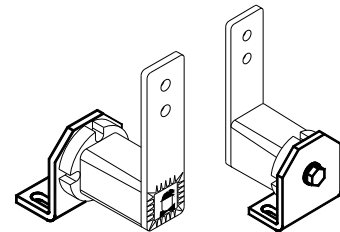

ST


Type Tipo	Cod. N°	Weight Peso [kg]	A	B	C	D	E	H	I	L	N	O	P	S	T	Peso Weight [kg]	Type Tipo	Cod. N°
SU 10	RE011010	0,07	40	30	5,0	7	4	75	60	7,5	65	7,5	80	2	7,4	0,03	ST 10	RE011020
SU 20	RE011011	0,18	55	35	10,0	9	5	95	75	10,0	80	10,0	100	2	9,0	0,07	ST 20	RE011021
SU 30	RE011012	0,27	65	40	12,5	9	6	105	85	10,0	95	10,0	115	2	11,5	0,13	ST 30	RE011022
SU 40	RE011013	0,60	90	60	15,0	11	8	135	110	12,5	115	12,5	140	3	17,0	0,27	ST 40	RE011023
SU 50	RE011014	0,90	110	70	20,0	13	8	160	135	12,5	145	12,5	170	4	18,0	0,39	ST 50	RE011024
SU 60	RE011015	1,70	130	90	20,0	17	10	190	160	15,0	180	15,0	210	5	22,0	0,75	ST 60	RE011025

Supports – Type: SB / Supporti – Tipo: SB


MATERIALS Steel.
TREATMENTS Oven-painted.
USE The bracket SB is used to facilitate the assembly of the elastic element on the machine.

MATERIALI Acciaio.
TRATTAMENTI Verniciatura a forno.
IMPIEGO La staffa SB è utilizzata per facilitare il montaggio dell'elemento elastico sulla macchina.



Type Tipo	Cod. N°	A	*		⊙		D	E	F	G	H	M	N	O	R	S	T	Weight Peso [kg]
			Size Taglia	ØB	Size Taglia	ØC												
SB 10	RE020510	30	10	6,5	20	5,5	35	13,0	10	7,0	7,5	45	30	11,5	27	4	46	0,09
SB 20	RE020511	40	20	8,5	30	6,5	44	13,0	12	7,0	7,5	55	32	13,5	34	5	58	0,17
SB 30	RE020512	50	30	10,5	40	8,5	55	15,5	20	9,5	10,0	70	38	16,5	43	6	74	0,29
SB 40	RE020513	65	40	12,5	50	10,5	75	21,5	25	11,5	12,5	90	52	21,0	57	8	98	0,72
SB 50	RE020514	80	50	16,5	60	12,5	85	24,0	35	14,0	15,0	110	55	21,0	66	8	116	0,93
SB 60	RE020515	100	60	20,5	70	12,5	110	30,0	40	18,0	20,0	140	66	26,0	80	10	140	1,82

* Hole B is used for the fixation of the **CRESA** tensioners.

⊙ Holes C are used for the fixation of the **VIB** elastic elements type: AR-P, AC-P, AD-P, TB, CR-P.

* Il foro B è da utilizzare per il montaggio degli "Elementi tenditori" **CRESA**.

⊙ I fori C sono da utilizzare per il montaggio degli "Elementi Elastici" **VIB** tipo: AR-P, AC-P, AD-P, TB, CR-P.