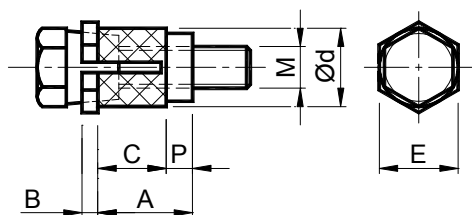
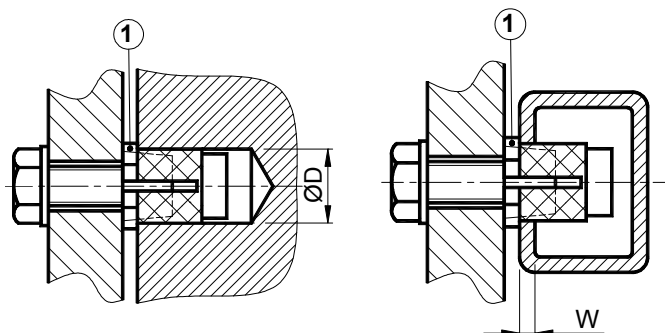


CAFRA SCHLÜSSEL SERIE: 700 - CAFRA SCHLÜSSEL SERIES: 700



MATERIAUX Acier
TRAITEMENTS Zingage blanc. Boulonnerie brute de la classe 12.9.
UTILISATION Unité de raccordement des parties de la structure métallique. Les alésages ØD doivent avoir des tolérances négatives. Bloquer le collet (1) avec une clé hexagonale pendant le serrage.

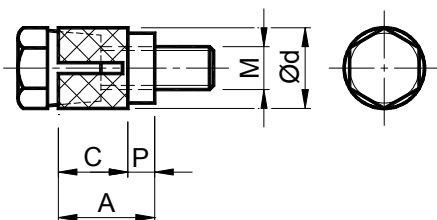


MATERIALS Steel
TREATMENTS Electrolytic zinc plated. Bolts in class 12.9 in raw condition.
USE Connection unit. It can be used for the union between parts of metallic structure. The housing holes ØD must have negative tolerances. The collar (1) must be locked using a hex wrench during the fastening operations.

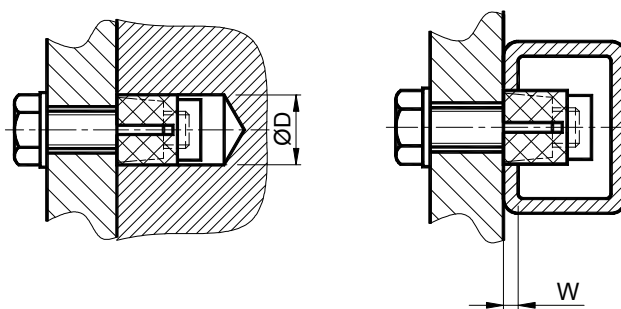
Type Type	Code n°	Ød	A	C	P	B	E	*M	○R	W min.	Q da N	Ms da N	Poids Weight Kg
710	CS020010	12	15	11	4	2	12	M6x30	M8x16	2	1000	1.7	0.022
711	CS020011	15	18	13	5	3	15	M8x35	M10x16	2	1500	4.2	0.033
712	CS020012	18	22	17	5	3	18	M10x40	M12x20	3	2500	8.5	0.078
713	CS020013	20	22	17	5	3	20	M12x45	M14x22	3	3600	14.7	0.106
714	CS020014	24	25	18	7	4	24	M14x50	M16x25	3	4500	23.5	0.160
715	CS020015	30	30	23	7	5	30	M16x55	M20x30	4	6800	35.8	0.262
716	CS020016	36	35	23	8	5	36	M20x65	M24x35	4	10600	69.6	0.470
717	CS020017	40	40	32	8	6	40	M22x75	M27x40	4	13500	94.2	0.600

*M: Vis de montage – Assembly screw / ○R: Vis de démontage – Dismantling screw
 Q: Effort développé par la vis par rapport aux plans – Generated stress of the screw with reference to conical planes
 Ms: Couple de serrage des vis – Couple of tightening screws

CAFRA SCHLÜSSEL SERIE: 800 - CAFRA SCHLÜSSEL SERIES: 800



MATERIAUX Acier
TRAITEMENTS Zingage blanc. Boulonnerie brute de la classe 12.9.
UTILISATION Unité de raccordement des parties de la structure métallique. Les alésages ØD doivent avoir des tolérances négatives.



MATERIALS Steel.
TREATMENTS Electrolytic zinc plated. Bolts in class 12.9 in raw condition.
USE Connection unit. It can be used for the union between parts of metallic structure. The housing holes ØD must have negative tolerances.

Type Type	Code n°	Ød	A	C	P	*M	○R	W min.	Q da N	Poids Weight Kg
810	CS020030	12	15	11	4	M6x30	M8x16	2	1000	0.015
811	CS020031	15	18	13	5	M8x35	M10x16	2	1500	0.031
812	CS020032	18	22	17	5	M10x40	M12x20	3	2500	0.060
813	CS020033	20	22	17	5	M12x45	M14x22	3	3600	0.075
814	CS020034	24	25	18	7	M14x50	M16x25	3	4500	0.160
815	CS020035	30	30	23	7	M16x55	M20x30	4	6800	0.262
816	CS020036	36	35	27	8	M20x65	M24x35	4	10600	0.470
817	CS020037	40	40	32	8	M22x75	M27x40	4	13500	0.600

*M: Vis de montage – Assembly screw / ○R: Vis de démontage – Dismantling screw
 Q: Effort développé par la vis par rapport aux plans – Generated stress of the screw with reference to conical planes
 Ms: Couple de serrage des vis – Couple of tightening screws